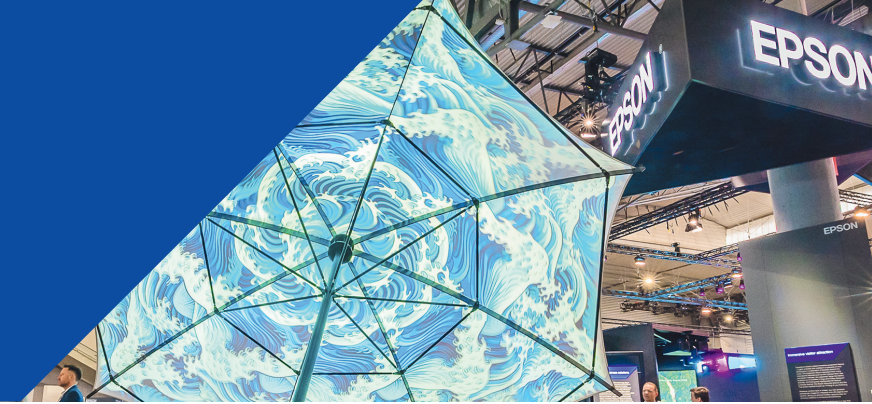


High brightness

Exceptional projectors for installation, rental and staging



Model	EB-PU1006W	EB-PU1007W EB-PU1007B	EB-PU1008W EB-PU1008B	EB-PU2010W EB-PU2010B	EB-PU2113W EB-PU2213B	EB-PU2116W EB-PU2216B	EB-PU2120W EB-PU2220B	EB-PQ2008W EB-PQ2008B	EB-PQ2010W EB-PQ2010B	EB-PQ2213B	EB-PQ2216W EB-PQ2216B	EB-PQ2220B	EB-L30002U EB-L30000U
Colour Light Output (lumens) normal / eco	6000 / 4200	7000 / 4900	8500 / 5950	10000 / 7000	13000 / 9100	16000 / 11200	20000 / 14000	8000 / 5600	10000 / 7000	13000 / 9100	16000 / 11200	20000 / 14000	30000 / 20000
Resolution	WUXGA / 4K-Enhancement	WUXGA / 4K-Enhancement	WUXGA / 4K-Enhancement	WUXGA / 4K-Enhancement	WUXGA / 4K-Enhancement	WUXGA / 4K-Enhancement	WUXGA / 4K-Enhancement	4K ⁴	4K ⁴	4K ⁴	4K ⁴	4K ⁴	WUXGA / 4K-Enhancement
Noise (dB) normal / eco	30 / 28	33 / 29	35 / 30	37 / 30	34 / 29	38 / 34	45 / 37	35 / 29	39 / 29	37 / 34	44 / 36	48 / 39	49 / 41
Throw ratio in native aspect	1.44 - 2.32:1 ¹	1.44 - 2.32:1 ¹	1.44 - 2.32:1 ¹	1.57 - 2.56:1 ²	1.57 - 2.56:1 ²	1.57 - 2.56:1 ²	1.57 - 2.56:1 ²	1.52 - 2.47:1 ²	1.52 - 2.47:1 ²	1.52 - 2.47:1 ²	1.52 - 2.47:1 ²	1.52 - 2.47:1 ²	1.74 - 2.35:1 ³
Dimensions (W x D x H mm)	545 x 436 x 164	545 x 436 x 164	545 x 436 x 164	545 x 436 x 164	586 x 492 x 185	586 x 492 x 185	586 x 492 x 185	545 x 436 x 164	545 x 436 x 164	586 x 492 x 185	586 x 492 x 185	586 x 492 x 185	790 x 710 x 299
Weight (Kg)	15.4	16.3	16.3	16.8	23.8 23.7	24.3 24.2	24.4	18.6	18.8	28.8	29.2	29.2	70.3 69.9
Power consumption (W) normal / eco	367 / 310	431 / 366	535 / 452	535 / 452	864 / 633	1083 / 773	1301 / 899	502 / 410	613 / 483	925 / 666	1114 / 784	1431 / 975	2325 / 1511
Dust resistance	-	-	-	-	IP5X ⁵	IP5X ⁵	IP5X ⁵	-	-	IP5X ⁵	IP5X ⁵	IP5X ⁵	-



ELPEC01 Camera unit

Optional external camera module designed for the EB-PU and EB-PQ Series and ELPLX Series ultra-short-throw lenses.

Unlock advanced features such as colour calibration, simple stacking, simple blending and the camera assist function for curved surfaces.

¹ With ELPLM08 - not supplied. ² With ELPLM15 - not supplied. ³ With ELPLM12 - not supplied.

⁴ Maximum physical resolution using 4K Crystal Motion technology.

⁵ IP5X certified in accordance with IEC Standard 60529. The IP5X certification is applied to the optical engine and light source module.

⁶ 2001 to 2023, 500-lumen and above, excluding screenless TVs, Futuresource Consulting - Quarterly Projector Market Insights - Worldwide Analyser CY23Q4.

⁷ Special order only.

EPSON®

High brightness

Lens options for installation, rental and staging



Model		ELPLX03	ELPLR05	ELPLU05	ELPLW07	ELPLM12	ELPLM13	ELPLM14	ELPLL09	ELPLL10
EB-L30000U	Throw ratio	0.35:1	0.63:1	0.90 - 1.09:1	1.29 - 1.76:1	1.74 - 2.35:1	2.28 - 3.46:1	3.41 - 5.12:1	4.79 - 7.20:1	6.96 - 10.45:1
	Lens shift V/H	+ 25% / ± 15%	± 15% / ± 5%	± 55% / ± 25%	± 65% / ± 30%	± 65% / ± 30%	± 65% / ± 30%	± 65% / ± 30%	± 55% / ± 25%	± 55% / ± 25%
	Weight	13kg	9.6kg	9.4kg	9.5kg	7.7kg	8kg	8.7kg	9.7kg	10.9kg



Model		ELPLX01WS ELPLX01S	ELPLX02WS ELPLX02S	ELPLU03S	ELPLU04	ELPLW05*	ELPLW08	ELPLW06	ELPLM08	ELPLM15	ELPLM10	ELPLM11	ELPLL08	
EB-PU1000 Series EB-PU1006 to EB-PU1008	WUXGA	Throw ratio	0.35:1	-	0.65 - 0.78:1	0.87 - 1.05:1	1.04 - 1.46:1	1.18 - 1.66:1	-	1.44 - 2.32:1	2.16 - 3.48:1	3.32 - 5.06:1	4.85 - 7.38:1	7.21 - 10.11:1
	16:10	Lens shift V/H	+ 17% / ± 10%	-	± 67% / ± 30%	± 67% / ± 30%	± 67% / ± 30%	± 67% / ± 30%	-	± 67% / ± 30%	± 67% / ± 30%	± 67% / ± 30%	± 67% / ± 30%	± 67% / ± 30%
EB-PU2000 Series EB-PU2010 to EB-PU2220	WUXGA	Throw ratio	-	0.35:1	0.48 - 0.57:1	0.64 - 0.77:1	0.77 - 1.07:1	0.86 - 1.2:1	1.19 - 1.62:1	-	1.57 - 2.56:1	2.42 - 3.71:1	3.54 - 5.41:1	5.27 - 7.41:1
	16:10	Lens shift V/H	-	+ 25% / ± 15%	± 24% / ± 10%	± 60 / ± 18%	± 24% / ± 10%	± 60% / ± 18%	± 60% / ± 18%	-	± 60% / ± 18%	± 60% / ± 18%	± 60% / ± 18%	± 60% / ± 18%
EB-PQ2000 Series EB-PQ2008 to EB-PQ2220	4K	Throw ratio	-	0.34:1	0.46 - 0.56:1	0.62 - 0.75:1	0.74 - 1.04:1	0.83 - 1.17:1	1.15 - 1.57:1	-	1.52 - 2.47:1	2.34 - 3.59:1	3.42 - 5.23:1	5.09 - 7.16:1
	16:9	Lens shift V/H	-	+ 23% / ± 10%	± 18% / ± 6%	± 58% / ± 16%	± 18% / ± 6%	± 58% / ± 16%	± 58% / ± 16%	-	± 58% / ± 16%	± 58% / ± 16%	± 58% / ± 16%	± 58% / ± 16%
	Weight		3.5kg	5kg	2.3kg	3.1kg	1.45kg	3.1kg	2.95kg	1.2kg	1.9kg	2.2kg	2.2kg	2.2kg

*ELPLW05 brightness is limited to maximum 12,000 lumens.

Trademarks and registered trademarks are the property of Seiko Epson Corporation or their respective owners. Product information is subject to change without prior notice.

EPSON[®]